

SOLUTION KEY

Section: 71

Name & Surname: _____

Math 120 Spring 2017-2018

Quiz no.: 05

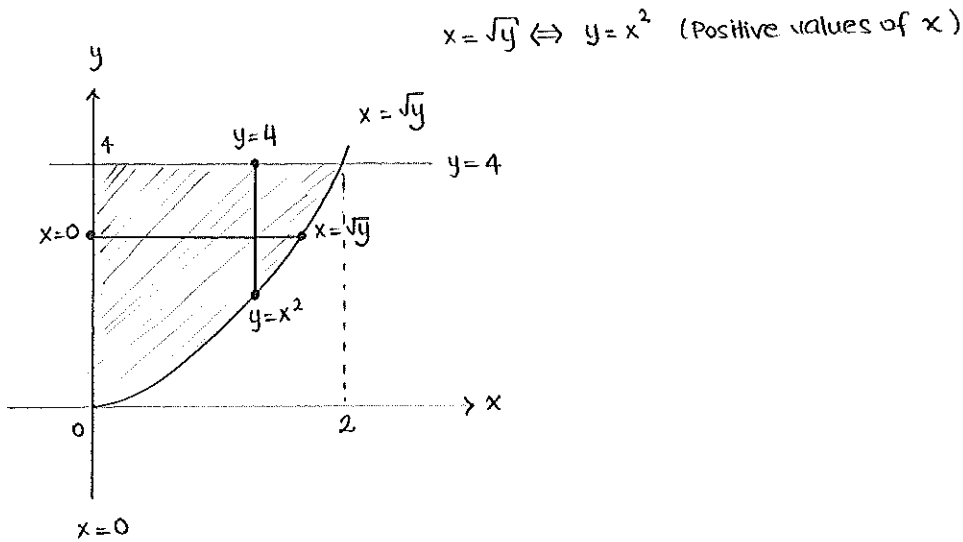
ID Number: _____

Date: 27.04.18

Time Limit: ~15 Minutes

Grade: _____

1. Express the double integral $\iint_D f(x,y)dA$ as iterated integrals in both orders $dx dy$ and $dy dx$, where D is the region bounded by the parabola $x = \sqrt{y}$ and the lines $y = 4$ and $x = 0$.



In the order $dx dy$:

$$\iint_D f(x,y)dA = \int_0^4 \int_0^{\sqrt{y}} f(x,y) dx dy$$

In the order $dy dx$:

$$\iint_D f(x,y)dA = \int_0^2 \int_{x^2}^4 f(x,y) dy dx$$